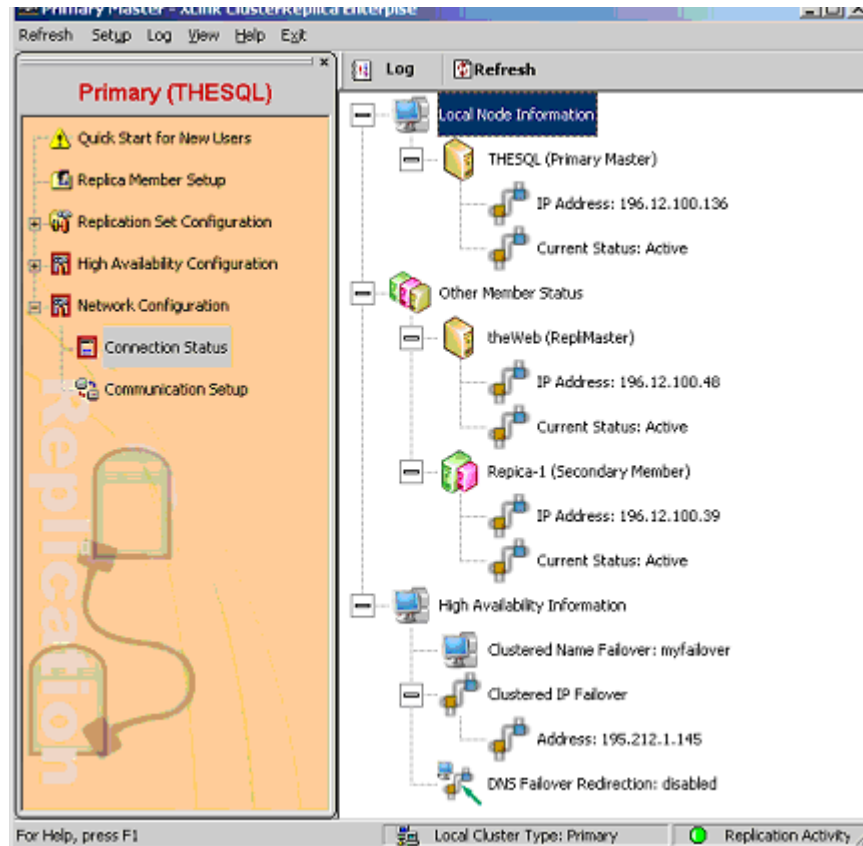


Cluster Status Log

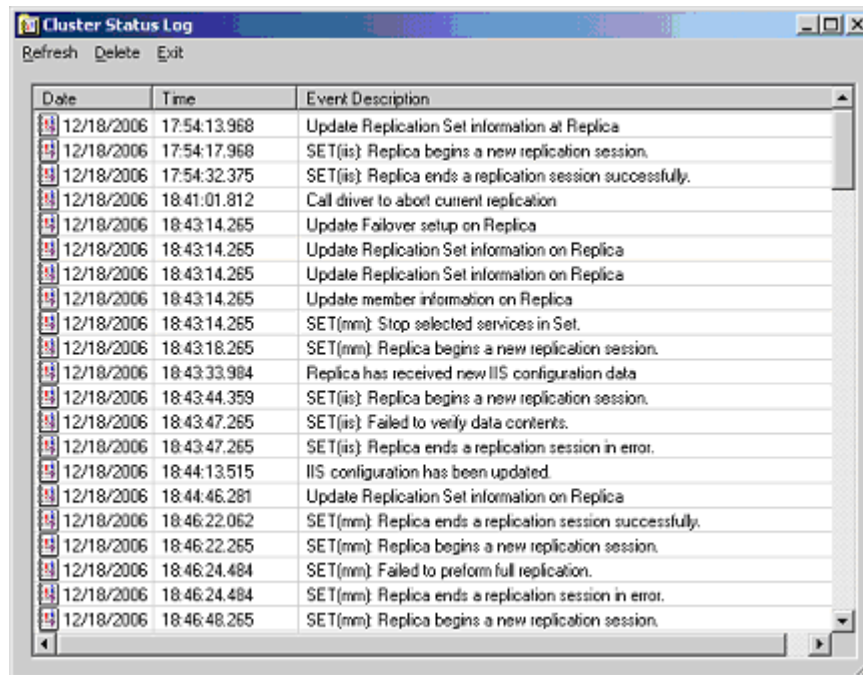
This log keeps detailed reports on cluster status. The two ways to access the **Cluster Log** are:

1. Under **Network Configuration/Connection Status**, click the **Log** button on the right panel
2. Click **Log** on the menu bar and then select **General Log**



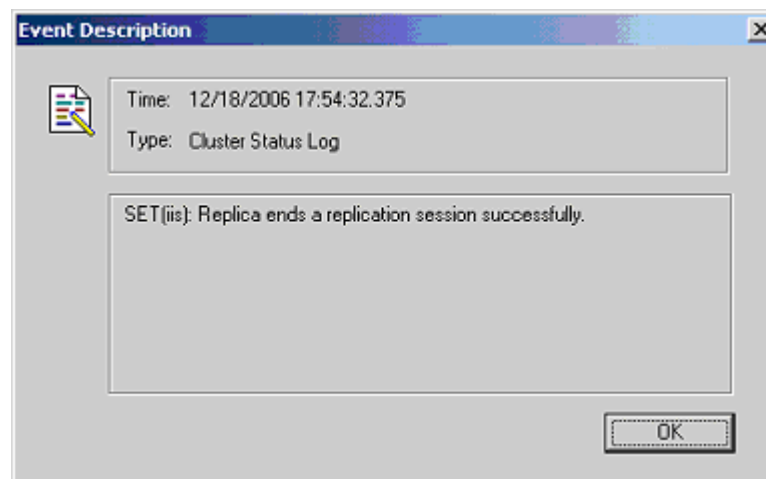
Cluster Log provides information on the clustered systems, such as

- The local system's cluster status - ie. active or standby
- The mode the cluster server is in - ie. standalone or replication only
- The data processing state the cluster server is in - ie. a full sync is completed or the process has failed



Date	Time	Event Description
12/18/2006	17:54:13.968	Update Replication Set information at Replica
12/18/2006	17:54:17.968	SET(iis): Replica begins a new replication session.
12/18/2006	17:54:32.375	SET(iis): Replica ends a replication session successfully.
12/18/2006	18:41:01.812	Call driver to abort current replication
12/18/2006	18:43:14.265	Update Failover setup on Replica
12/18/2006	18:43:14.265	Update Replication Set information on Replica
12/18/2006	18:43:14.265	Update Replication Set information on Replica
12/18/2006	18:43:14.265	Update member information on Replica
12/18/2006	18:43:14.265	SET(mm): Stop selected services in Set.
12/18/2006	18:43:18.265	SET(mm): Replica begins a new replication session.
12/18/2006	18:43:33.984	Replica has received new IIS configuration data
12/18/2006	18:43:44.359	SET(iis): Replica begins a new replication session.
12/18/2006	18:43:47.265	SET(iis): Failed to verify data contents.
12/18/2006	18:43:47.265	SET(iis): Replica ends a replication session in error.
12/18/2006	18:44:13.515	IIS configuration has been updated.
12/18/2006	18:44:46.281	Update Replication Set information on Replica
12/18/2006	18:46:22.062	SET(mm): Replica ends a replication session successfully.
12/18/2006	18:46:22.265	SET(mm): Replica begins a new replication session.
12/18/2006	18:46:24.484	SET(mm): Failed to preform full replication.
12/18/2006	18:46:24.484	SET(mm): Replica ends a replication session in error.
12/18/2006	18:46:48.265	SET(mm): Replica begins a new replication session.

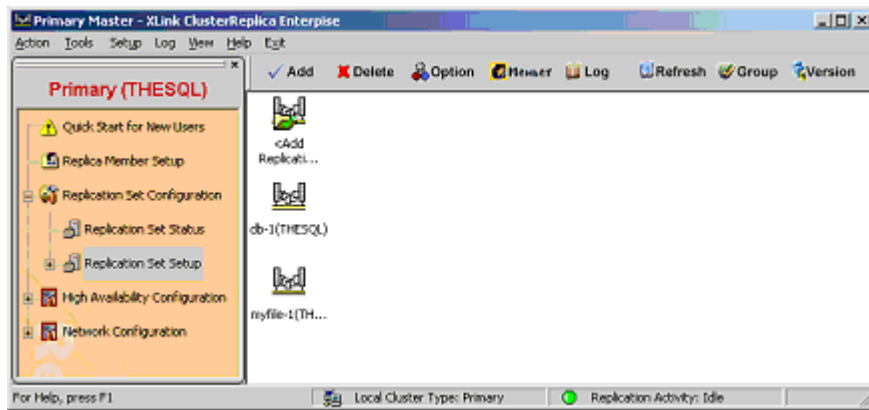
If the description of an item in the log file is too long, double click the item to bring up the window with full display.



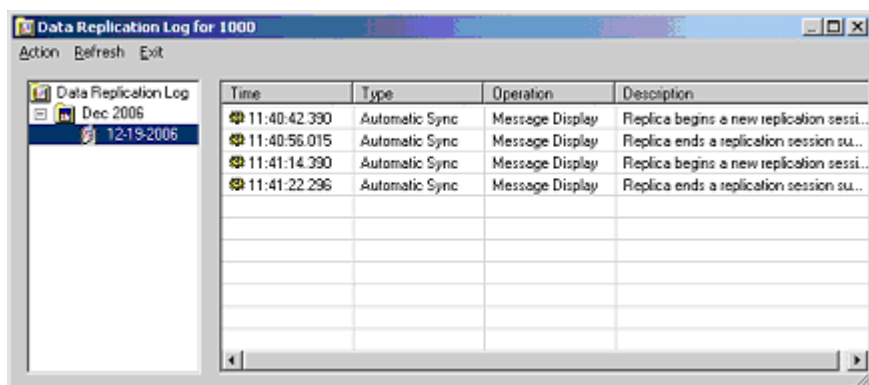
Data Replication Log

This log keeps detailed reports on data replication actions. The two ways to access the **Replication Log** are:

- Under **Replication Set Configuration/Replication Set Setup**, click the **Log** button on the right panel, or
- Click **Log** on the menu bar and then select **Set Log**



The data replication log is created for you to trace the replication actions on files or folders, and decide if some files or folders are not properly replicated that you need to run a manual-sync to ensure accuracy of the data on the Standby system.



If the description of an item in the log file is too long, double click the item to bring up the window with full display.

