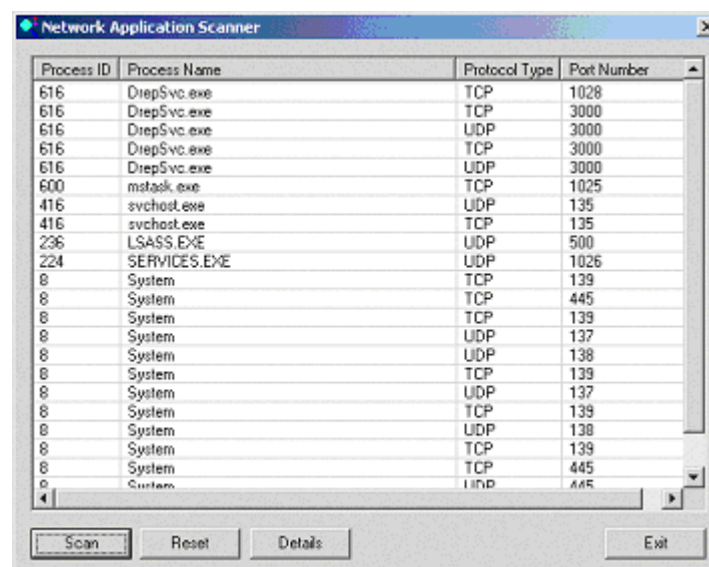


Utilities Included In ClusterReplica

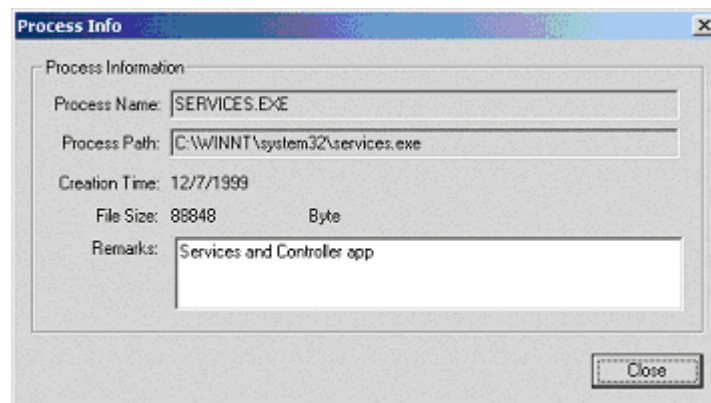
1. **Application Data Synchronizer** - This utility tool assists the clients of the ClusterReplica servers to self-restore and manage archived files from their Windows local system.
2. **License Manager** - This utility tool allows users to change license for ClusterReplica Enterprise without rebooting the system.
3. **Network Application Scanner** - This utility tool provides the network configuration information of the Windows local system.
4. **Network Utilities** - Click this selection to access the two utility tools:
 - o **Host Lookup** - to help users match the IP address of a web host with its name.
 - o **Trace Route** - to help users trace the routing path of service providers between the host and the traced servers.
5. **Port Reference Tables** - This utility tool provides the port reference information of the Windows local system.
6. **Support Reporting Tool** - Click this selection to generate support logs for technical support issues on this ClusterReplica package.
7. **Uninstall** - Click this selection to start the uninstall process for removing the ClusterReplica package from the Windows local system.

Network Application Scanner

The Network Application Scanner can scan the operating system and list all ports being used currently on local system. From its dialog box, click on button **scan** to get the services of all applications currently running on the system listed.

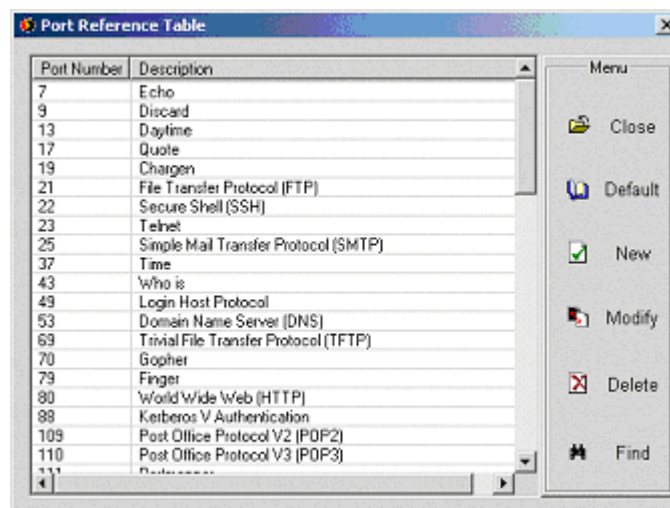


Click on button **Details** will get a popup box to come up showing you the detailed information of the network application.



Port Reference Table

The Port Reference Table lists some of the most commonly used ports with description as reference for users.



On the menu,

- **Default** will bring up the default listing.
- **Modify** allows changing of a port's description.
- New port definition can be created in **New**.

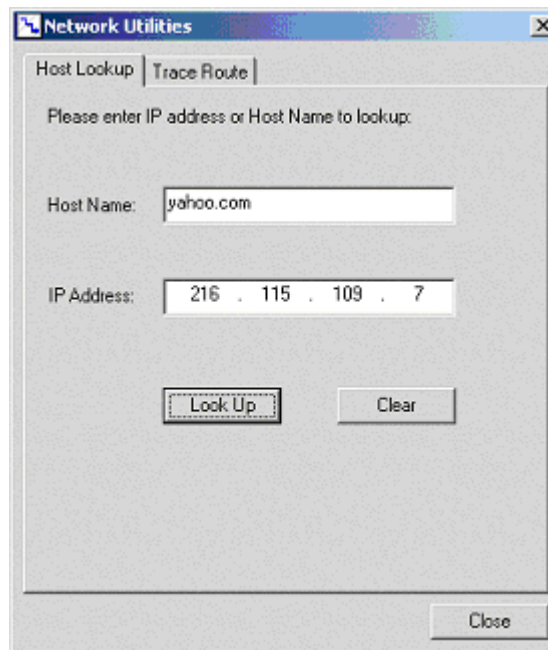
Click on the column title **Port Number** will sort the port numbers in ascending order; and **Description** will sort the port descriptions in ascending alphabetical order.

Network Utilities

There are times when a user needs to know the IP address of a registered host, or the network transaction routing path. ClusterApplica's Network Utilities tool can help you achieving this objective. This network utility tool consists of two features: Host Lookup and Trace Rout.

1. Host Lookup

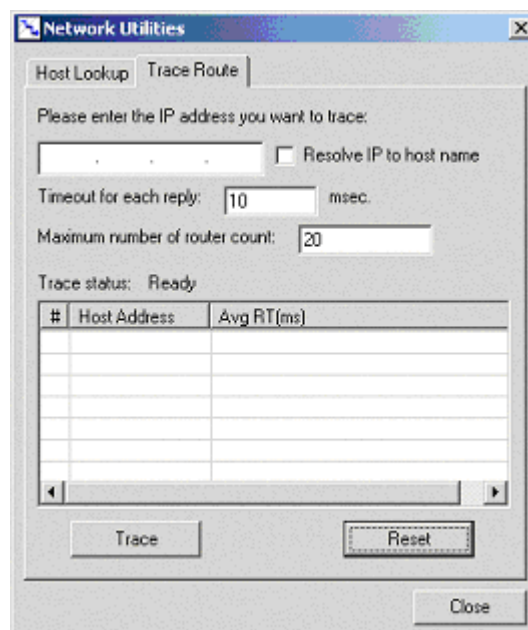
Host Lookup can help users match the IP address of a web host with its name. As shown in figure 6.1 below, to find the IP address of yahoo, type **yahoo.com** in the *host name* window and click on button **Look Up**. The IP address for yahoo.com will be found and filled in the *IP Address* window.



A **reverse lookup** can also be done using **Host Lookup**. In this case, user simply types in the IP address to find the registered host's name.

2. Trace Route

The second feature in Network Utilities is **Trace Route**. This tool is created to help users trace the routing path of service providers between the host and the traced servers. Up to 20 router activities will be listed.



It is fairly simple to use this tool. Select **Trace Route** tap from the Network Utilities GUI, type in the Host's IP address and then click on button **Trace**. The packet routing path of all internet service providers (up to 20) will be listed in the **Trace status** screen.