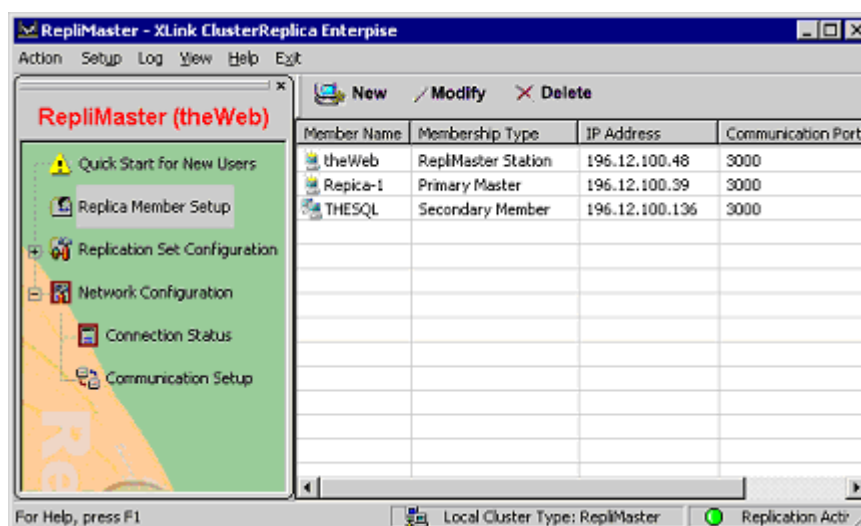


Using A Repli-Master Station

A **Repli-Master** station is a Replica Member that can receive data as well as send data to other Replica Member stations. But it cannot initiate server Failover.

To add a server to a clustering structure and define it as a **Repli-Master** station creates a clustering of many-to-many data replication structure. So, if the server does not require absolute availability, for data protection purposes, simply join it to an existing clustering structure and define as the Repli-Master station can be an efficient solution.



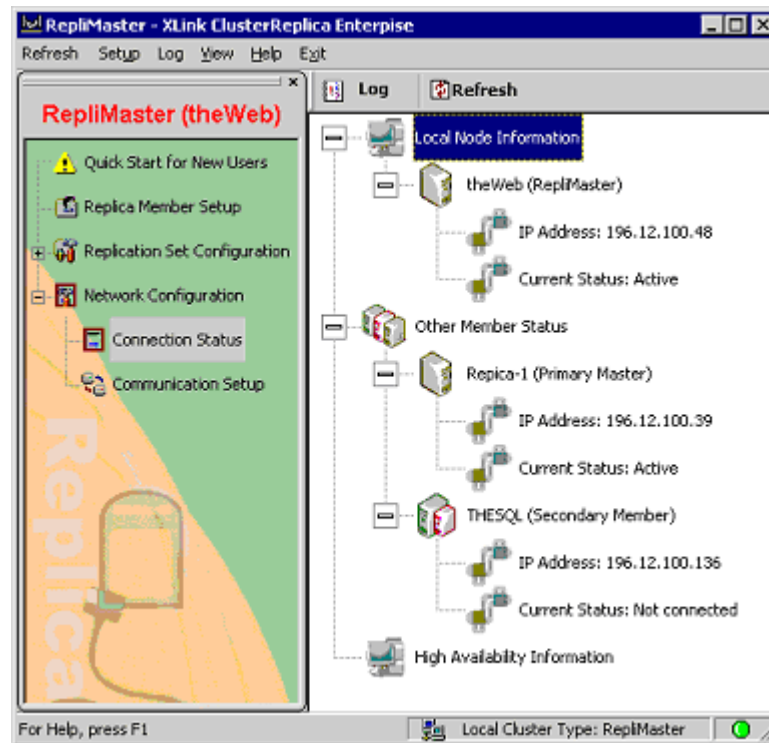
If **Failover** is needed for the server, a new clustering structure must be set and the server it to be defined as the **Primary Master** to accomplish the goal.

Roles Of A Repli-Master

A **Repli-Master** is a Master station without the management power and the configuration rights. While mainly function as the data source for data replication, it can also be used as a Replica Member station to take in data from other data source stations. A Repli-Master can also be used as a Secondary station to respond a Failover from the Primary station.

Following are the examples of roles a Repli-Master can take:

- A Repli-Master can replicate data to other Replica Member stations, at the same time receiving data from the Primary Master - from the Primary Master, add the new member as a Repli-Master to set the server as a data source in the clustering so that it can replicate data to other Replica Member stations.



- A Repli-Master can also be used as a Secondary station for Failover - from the Primary Master, [configure the High Availability Configuration](#) and select the Repli-Master Member by its IP number for the target of **Secondary** station.

